



VARIABLE SPEED
PACKAGED BOOSTERS.
PLAIN AND SIMPLE.

AquaBoost™ Packaged Systems



BUILT WITH THE QUALITY YOU'VE COME TO EXPECT FROM GOULDS WATER TECHNOLOGY

BRAQBST R3

 **GOULDS**
WATER TECHNOLOGY
a xylem brand

AQUABOOST

PUMP STATIONS

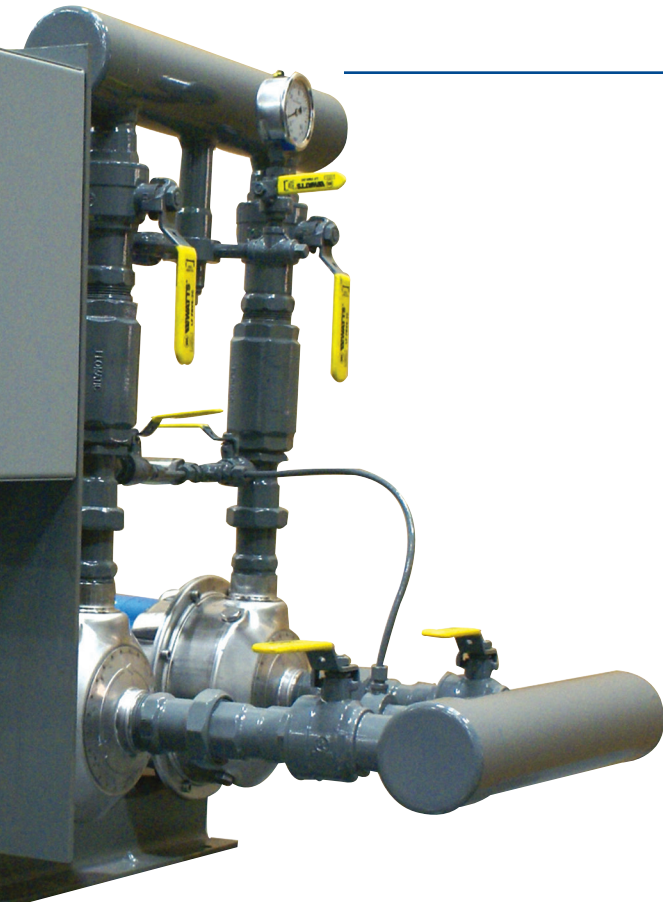
AquaBoost Pump Stations are designed to be simple from beginning to end. They are simple to specify, simple to install, simple to set up. Best of all, with Goulds Water Technology's single-source responsibility and technical expertise, it's simple to work with us. The AquaBoost VS (Variable Speed) and AquaBoost CS pump stations are a pre-engineered, factory assembled line of packaged booster systems that provide hydraulic capabilities from 20 GPM to 220 GPM and boosts up to 55 PSI. AquaBoost Pump Stations give you an intelligent pump system that provides maximum value, proven reliability, superior energy efficiency and better system protection. In addition, the AquaBoost Pump Station provides consistent performance even with your changing system demands. The AquaBoost Pump Station provides pressure boosting for a variety of applications including irrigation buildings, commercial plants, municipal and rural water districts.



- ANSI / NSF 61 / NSF 61 Annex G and 372 certified
- Easy installation and start-up
- Goulds Water Technology stainless steel pumps

GENERAL INFORMATION

For complete system capabilities and detailed specifications go to www.xyleminc.com/brands/gouldswatertechnology



FEATURES AND SPECIFICATIONS

- All systems are UL listed as packaged pumping systems
- Compact Footprint - Ideal for retrofit installations and new construction.
- 115V, 208V, 230V, 380V, 460V, 575V models available.
- Simplex and Duplex
- Each system is fabricated with Goulds Water Technology 316L stainless steel centrifugal pumps
- Standard efficiency TEFC 1PH motors; Premium efficiency TEFC 3PH motors
- System protection from overvoltage, undervoltage, blocked suction, cavitation, NPSHa, phase loss, short circuit (protection capabilities vary for AquaBoost VS protection varies between ABII and CPC drives/controls), transducer failure and motor current overload.
- Liquid temperatures up to 105° F
- Ambient temperatures up to 104° F
- Flow up to 220 GPM. Maximum boost of 55 PSI.
- Pump run-out protection
- Dry running protection
- Programmable lead/lag alternation (duplex)
- Programmable system pressure starting (VS)
- Fault detection and alarm notification
- Motor Run Relay (CPC)
- Isolation valves (duplex systems)

All AquaBoost Packaged Systems are certified ANSI/NSF-61/ NSF-61 Annex G and 372

What does the NSF/ANSI certification mean?

NSF/ANSI Standard 61 - *Drinking Water System Components* was published in 1988 to establish minimum requirements for the control of potential adverse human health effects from products that contact drinking water.

NSF/ANSI Standard 61 includes criteria for testing and evaluating products to ensure they do not leach contaminants, such as lead, into the water that would be a health concern. These contaminants include those regulated by the United States Environmental Protection Agency (USEPA) and Health Canada, as well as any other non-regulated compounds that may be of concern.

What does this mean for you?

Across the country, states, cities and municipalities are making ANSI/NSF-61/NSF-61 Annex G and 372 a requirement for potable water applications. As more products are rolled into federal standards for safe drinking water, Goulds Water Technology makes it easy to get the job done with our fully-certified UL-Listed packaged systems.

QUALIFICATIONS

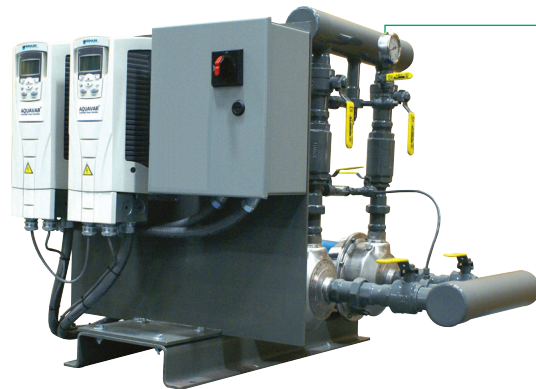
AquaBoost VS

Variable Speed Simplex



Specifically designed as a compact, easy to install and maintain package for applications where sufficient main pressure is not available or elevation is a problem. Typical installations include residences, apartment buildings, condominiums and light commercial applications. The AquaBoost VS is available in both one and two pump packages. Simplex capacities range from 20 to 110 GPM at a boost of up to 55 psig. Duplex capacities are up to 220 GPM.

Variable Speed Duplex



As opposed to a constant-speed control panel, a variable-speed drive controls the speed of the pump to precisely match system demand. The AquaBoost VS drastically reduces tank size and can significantly improve energy usage.

- Variable-Speed Package Performance
- Minimized Project Expenses

AquaBoost VS Systems

Pumps are close coupled with stainless steel casing and internals. All piping on the package is non-ferrous for use with potable water.

Pump motors are TEFC from 1 HP through 5 HP. The AquaBoost VS is factory assembled, wired and tested. Electrical panel is UL listed, NEMA 1 enclosure with voltages ranging from 115/1/60, 208/1/60, 230/1/60, 208/3/60, 230/3/60, 380/3/50 and 575/3/60. The pump(s) will stop during periods of low demand and restart upon a drop in system pressure.

Duplex models provide automatic alternation to permit even pump usage, and units can be sized to act as 100% stand by or stage pumps based on demand. Lag pump will start automatically upon failure of lead pump and pump failure is indicated at the panel.

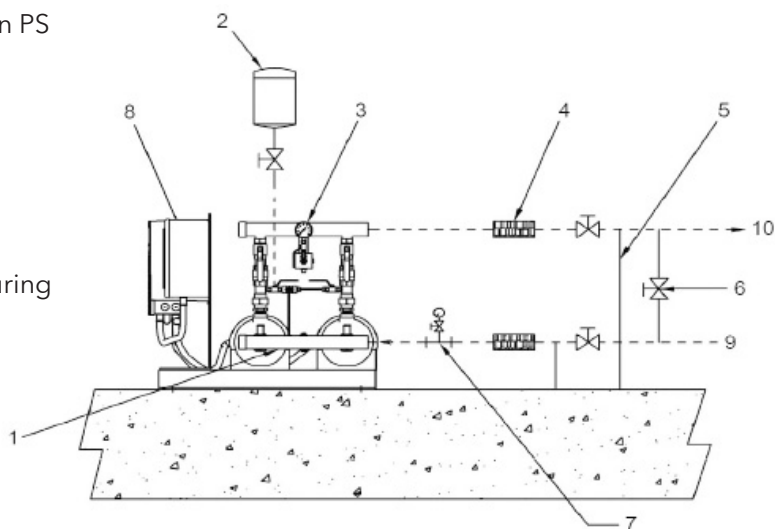
OPTIONS:

- Low Suction Pressure Cutout
- Storage Tank (shipped loose from factory)

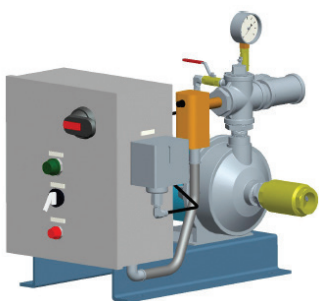
AquaBoost Packaged Systems

Typical Field Piping (Variable Speed Duplex shown)

1. ¼ in. tap on the suction manifold for Low Suction PS
2. Optional tank
3. Discharge Gauge
4. Vibration eliminator
5. Anchor the pipe securely if eliminators are used
6. If a bypass line is installed, keep valve closed during normal operation. (Do not install a check valve.)
7. Recommended suction gauge
8. Aquavar CPC controller
9. City water
10. To system



Sizing Guide



Simplex AquaBoost Selection Chart

PSI	20 GPM	30 GPM	40 GPM	50 GPM	60 GPM	70 GPM	80 GPM	90 GPM	100 GPM	110 GPM
20					1B20	1B20	1B30	1B30	1B30	
25			1A15	1B20	1B20	1B30	1B30	1B30	1B30	1B50
30	1A15	1A15	1A20	1B20	1B30	1B30	1B50	1B50	1B50	1B50
35	1A15	1A15	1A20	1B30	1B30	1B50	1B50	1B50	1B50	
40	1A15	1A20	1A30	1B50	1B30	1B50	1B50	1B50		
45	1A20	1A20	1A30	1B50	1B50	1B50				
50	1A20	1A30	1B50	1B50						
55	1A20	1A30								

CONSULT FACTORY

*Above selections provide non-overloading motors across entire pump curve.

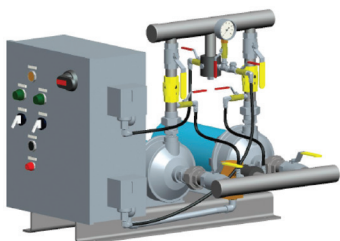
Duplex AquaBoost Selection Chart

PSI	40 GPM	60 GPM	80 GPM	100 GPM	120 GPM	140 GPM	160 GPM	180 GPM	200 GPM	220 GPM
20					2B20	2B20	2B30	2B30	2B30	
25			2A15	2B20	2B20	2B30	2B30	2B30	2B30	2B50
30	2A15	2A15	2A20	2B20	2B30	2B30	2B50	2B50	2B50	2B50
35	2A15	2A20	2A30	2B30	2B30	2B50	2B50	2B50	2B50	
40	2A20	2A20	2A30	2B50	2B30	2B50	2B50	2B50		
45	2A20	2A20	2B50	2B50	2B50	2B50				
50	2A20	2A30	2B50	2B50						
55	2A20	2A30								

CONSULT FACTORY

* Above selections provide non-overloading motors across entire pump curve.

Selections are based on two pumps in parallel. Refer to NPE pump curves or consult factory for duty/standby operation.

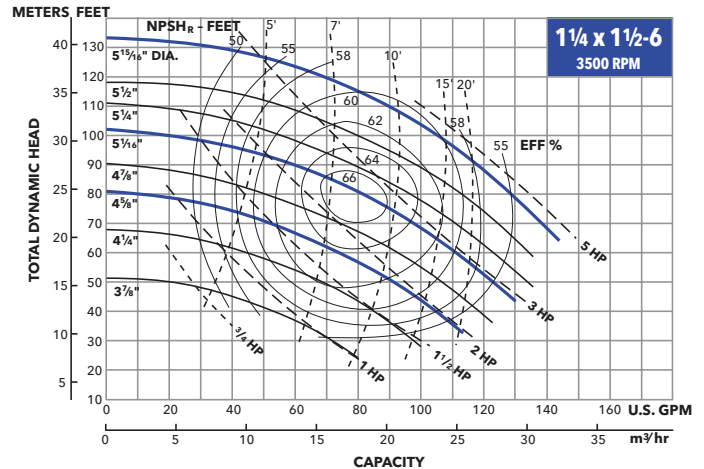
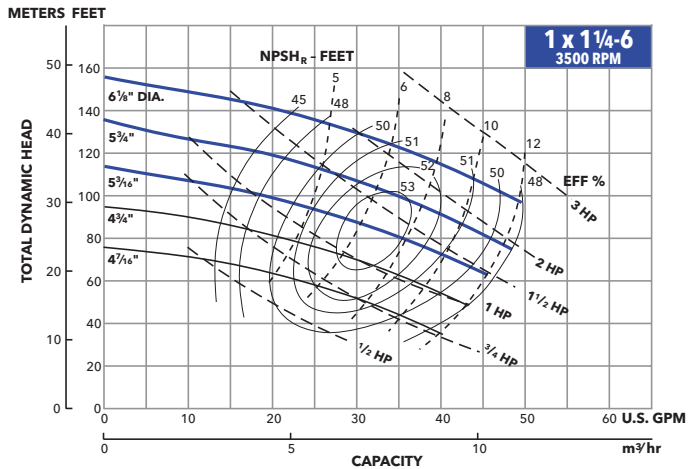


AquaBoost Packaged Systems

Dimensions and Weights

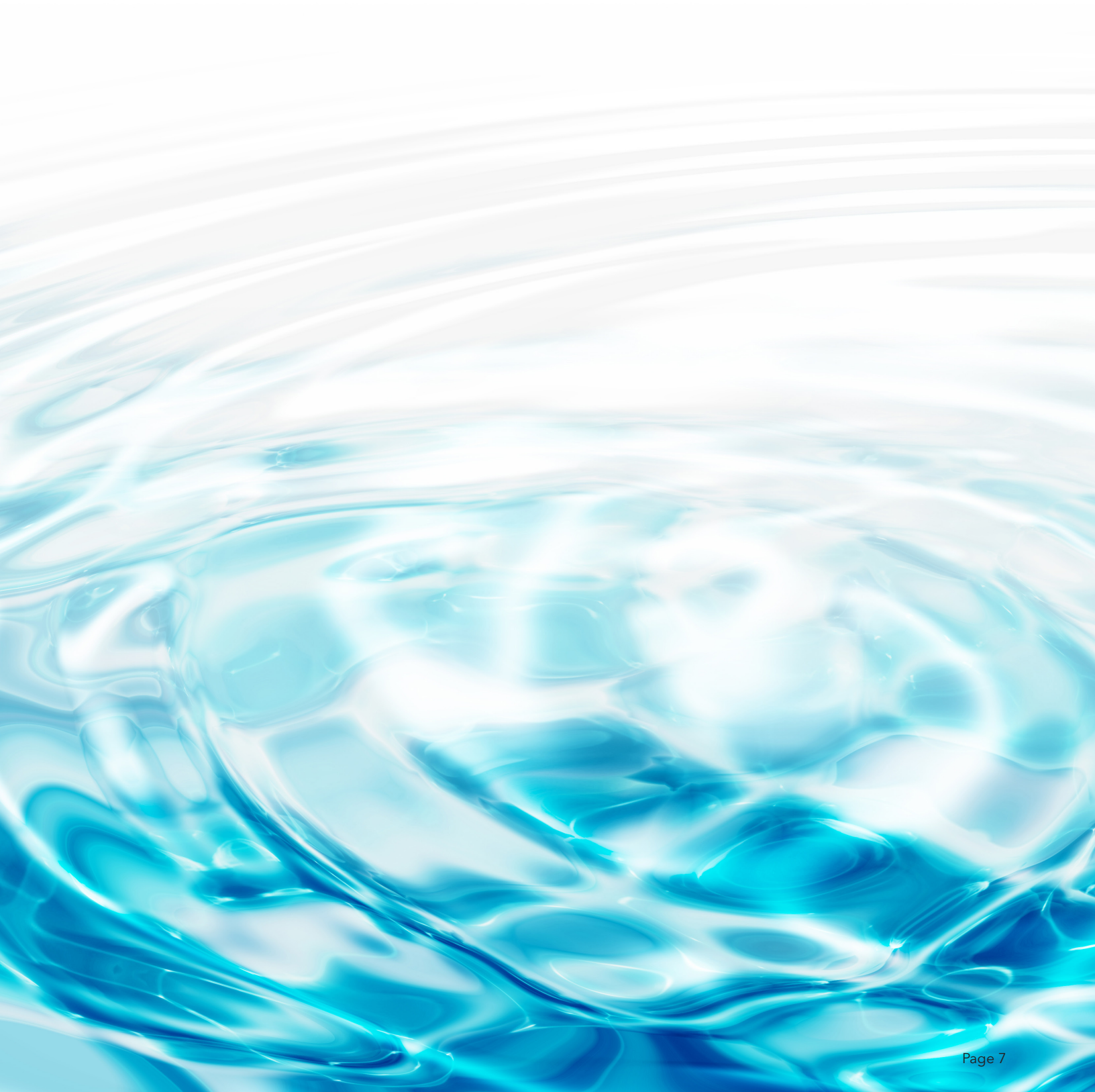
Model	HP	Overall Dimensions and Weights		System Connections	
		Simplex	Duplex	Simplex	Duplex
1A15 or 2A15	1.5	24 ⁵ / ₈ " L x	29 ¹ / ₄ " L x	1 ¹ / ₂ "	2"
1A20 or 2A20	2	19 ³ / ₄ " W x 17 ³ / ₈ " H	30 ³ / ₄ " W x 24 ⁷ / ₈ " H		
1A30 or 2A30	3	206 LBS	410 LBS		
1B20 or 2B20	2	24" L x	30 ³ / ₄ " L x	3"	
1B30 or 2B30	3	19 ³ / ₄ " W x 17 ³ / ₈ " H	32 ⁵ / ₈ " W x 29" H		
1B50 or 2B50	5	206 LBS	410 LBS		

AquaBoost Packaged Systems Pump Curves



Model Number

AQUABOOST NAMING SYSTEM					
# of pumps	Pump Model/RPM	HP	Voltage/Phase	Impeller Diameter	Control
1	A (1 x 1 ¹ / ₄ , 3600)	05 = 1/2	1 = 115/1/60	A = 4 ⁵ / ₈ "	VS = Variable Speed
2	B (1 ¹ / ₄ x 1 ¹ / ₂ , 3600)	07 = 3/4	2 = 208/3/60	B = 5 ¹ / ₁₆ "	
		10 = 1	3 = 380/3/50	C = 5 ³ / ₁₆ "	
		15 = 1 1/2	4 = 460/3/60	D = 5 ³ / ₄ "	
		20 = 2	5 = 575/3/60	E = 5 ¹⁵ / ₁₆ "	
		30 = 3	6 = 230/1/60	F = 6 ¹ / ₈ "	
		50 = 5	7 = Other	Z = other	
			8 = 230/3/60		
			A = 208-230/3/60		
			B = 208-230/1/60		





Xylem |'zīləm|

- 1) The tissue in plants that brings water upward from the roots;
- 2) a leading global water technology company.

We're a global team unified in a common purpose: creating advanced technology solutions to the world's water challenges. Developing new technologies that will improve the way water is used, conserved, and re-used in the future is central to our work. Our products and services move, treat, analyze, monitor and return water to the environment, in public utility, industrial, residential and commercial building services, and agricultural settings. With its October 2016 acquisition of Sensus, Xylem added smart metering, network technologies and advanced data analytics for water, gas and electric utilities to its portfolio of solutions. In more than 150 countries, we have strong, long-standing relationships with customers who know us for our powerful combination of leading product brands and applications expertise with a strong focus on developing comprehensive, sustainable solutions.

For more information on how Xylem can help you, go to www.xylem.com



Xylem Inc.
2881 East Bayard Street Ext., Suite A
Seneca Falls, NY 13148
Phone: (844) XYL-PUMP [844-995-7867]
Fax: (888) 322-5877
www.gouldswatertechnology.com

Goulds is a registered trademark of Goulds Pumps, Inc. and is used under license.
© 2017 Xylem Inc. BRAQBST R3 September 2017